

# BARD® MAGNUM®

REUSABLE CORE BIOPSY SYSTEM

FROM THE LEADER  
IN CORE TISSUE BIOPSY



A NEW, MORE  
POWERFUL INSTRUMENT

# BARD® MAGNUM®

REUSABLE CORE BIOPSY SYSTEM

## MINIMUM SIZE. MAXIMUM POWER.

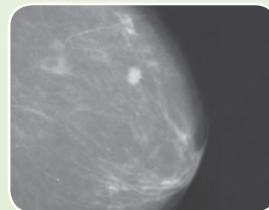


THE ONLY REUSABLE SYSTEM FEATURING ONE-HANDED COCKING AND A CHOICE OF TWO PENETRATION DEPTHS

- Functional instrument design provides the convenience and control of one-handed cocking.
- Penetration depths of 15mm or 22mm can be selected to achieve desired results in a variety of applications.

### MAXIMUM POWER IN A MINIMUM SIZE - TO MEET A VARIETY OF APPLICATIONS SIMPLY AND EFFECTIVELY

- The MAGNUM® Instrument's design and versatility make it an ideal choice for effective biopsy at a number of anatomical sites, including breast, prostate, lung, kidney and liver.
- A range of needle lengths and gauges matches virtually every procedural need.
- A high velocity throw and precise needle design help assure consistently excellent core samples.
- The MAGNUM® Instrument is compact, easy to use, comfortable to handle, and effective in providing a quality result time after time.





## POWER = PERFORMANCE. NO REUSABLE INSTRUMENT IS MORE POWERFUL

- The powerful spring system delivers a velocity high enough to assure consistently excellent core samples.
- The unmatched force of the MAGNUM® Instrument enables the clinician to accurately penetrate difficult lesions with minimal tissue displacement.

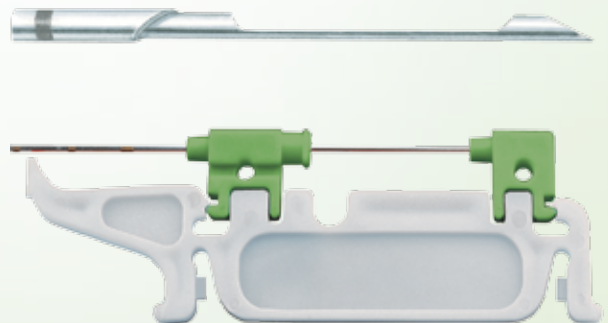


## NOW FROM THE LEADER IN CORE TISSUE BIOPSY - THE SMALLEST REUSABLE BIOPSY SYSTEM

- Lightweight and ergonomic design of MAGNUM® Instrument help enhance control and ease of handling during biopsy procedures.
- A length of 12cm (about 4 1/2") makes MAGNUM® Instrument comfortable for the user and easy to manipulate.

## FEATURES FOR IMPROVED PERFORMANCE AND VERSATILITY

- The MAGNUM® needle is disposable; its sharpness and large sample notch produce clean shearing and safe capture of core tissue.
- Unique spacer allows for lightweight stereotactic or CT needle positioning, and is easily removed after the needle is placed into the instrument.



**BARD® MAGNUM®**  
REUSABLE CORE BIOPSY SYSTEM



TRUGUIDE® Coaxial Biopsy Needle

**SURPRISINGLY SMALL...  
AMAZINGLY POWERFUL, COMPATIBLE  
WITH THE BARD® TRUGUIDE® COAXIAL BIOPSY  
NEEDLE - FOR ENHANCED EFFICIENCY AND ACCURACY**

**ORDERING INFORMATION**

**MG1522 - MAGNUM® Reusable Core Biopsy Instrument**

Colour Code	MAGNUM® Biopsy System Needles Order Number	Gauge x Length	TRUGUIDE® Coaxial Biopsy Needle Length (cm)	TRUGUIDE® Coaxial Biopsy Needle Order Number	Standard Needle Order Number
●	MN2010	20 x 10	7.0	C2010B	-
●	MN2013	20 x 13	10.0	C2013B	-
●	MN2016	20 x 16	13.0	C2016B	-
●	MN2020	20 x 20	17.0	C2020B	-
●	MN1810	18 x 10	7.0	C1810B	-
●	MN1813	18 x 13	10.0	C1813B	-
●	MN1816	18 x 16	13.0	C1816B	-
●	MN1820	18 x 20	17.0	C1820B	-
●	MN1824	18 x 24	-	-	-
●	MN1830	18 x 30	-	-	-
●	MN1610	16 x 10	7.0	C1610B	-
●	MN1613	16 x 13	10.0	C1613B	-
●	MN1616	16 x 16	13.0	C1616B	-
●	MN1620	16 x 20	17.0	C1620B	-
●	MN1410	14 x 10	7.0	C1410B	AX1410
●	MN1413	14 x 13	10.0	C1413B	AX1413
●	MN1416	14 x 16	13.0	C1416B	AX1416
●	MN1420	14 x 20	-	-	-
●	MN1210	12 x 10	7.0	C1210B	-
●	MN1213	12 x 13	10.0	C1213B	-
●	MN1216	12 x 16	13.0	C1216B	-
●	MN1220	12 x 20	-	-	-

<b>AUSTRIA</b>	Bard Medica SA, Thaliastrasse 125A/1/5, 1160 Wien, Austria, Tel: +43 14 949130, Fax: +43 14 94913030
<b>BENELUX</b>	Bard Benelux n.v., Hagelberg 2, 2250 Olen, Belgium, Tel: +32 14 286950, Fax: +32 14 286955
<b>CZECH REPUBLIC</b>	Bard Czech Republic s.r.o., Taborska 619, 140 00 Prague, Czech Republic, Tel: +420 242 408630, Fax: +420 242 410185
<b>FRANCE</b>	Bard France SAS, Av. Joseph Kessel 164-166, Parkile P14, 78960 Voisins-le-Bretonneux, France, Tel: +33 1 39305858, Fax: +33 1 39305859
<b>GERMANY</b>	C.R. Bard GmbH, Wachhausstrasse 6, 76227 Karlsruhe, Germany, Tel: +49 721 94450, Fax: +49 721 9445111
<b>GREECE</b>	Bard Hellas SA, 22, Alkiviadou St & 72, Vouliagmenis Av, 16675 Glyfada, Greece, Tel: +30 210 9690770, Fax: +30 210 9628810
<b>IRELAND</b>	Bard Ltd, Arena House, Arena Road, Sandyford, Dublin 18, Ireland, Tel: +353 121 30706, Fax: +353 121 30604
<b>ITALY</b>	Bard S.p.A., Via Cina 444, 00144 Roma, Italy, Tel: +39 06 524931, Fax: +39 06 5295852
<b>NORDIC</b>	Bard Norden AB, Karbingatan 22, 254 67 Helsingborg, Sweden, Tel: +46 42 386000, Fax: +46 42 386010
<b>POLAND</b>	Bard Poland sp.z.o.o., ul. Cybernetyki 7B, 02-677 Warsaw, Poland, Tel: +48 22 3210930, Fax: +48 22 3210938
<b>PORTUGAL</b>	C.R. Bard Portugal,LDA, Rua Castilho 13D-2A, 1250-066 Lisboa, Portugal, Tel: +351 21 3190330, Fax: +351 21 3190339
<b>SPAIN</b>	Bard de Espana S.A., Avda. Diagonal 652-656, Edificio A, 4a planta, 08034 Barcelona, Spain, Tel: +34 93 2537800, Fax: +34 93 2537834
<b>SWITZERLAND</b>	Bard Medica SA, Seestrasse 64, 8942 Oberrieden/Zürich, Switzerland, Tel: +41 44 7225360, Fax: +41 44 7225370
<b>UK</b>	Bard Limited, Forest House, Tilgate Forest Business Park, Brighton Road, Crawley, West Sussex RH11 9BP, UK, Tel: +44 1293 527888, Fax: +44 1293 552428