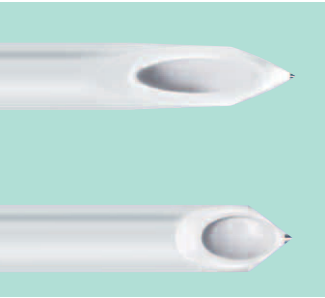


Product Specifications

Regional Anesthesia

Needles	Description	Ø (G) and length (inch)	Ø and length (mm)	Code No. (REF)	Sales unit/ Pcs.
	Stimuplex® D, needles with 15° bevel				
	D 25/035	25 G x 1 1/3"	0.5 x 35 mm	4894103 U	25
	D 25/055	25 G x 2 1/8"	0.5 x 55 mm	4894111 U	25
	D 27/050	22 G x 2"	0.7 x 50 mm	4894146 U	25
	D 27/080	22 G x 3 1/8"	0.7 x 80 mm	4894154 U	25
	D 27/120	22 G x 4 3/4"	0.7 x 120 mm	4894162 U	25
	Stimuplex® D, needle with 30° bevel				
	D 17/050	22 G x 2"	0.7 x 50 mm	4894197 U	25



B | BRAUN
SHARING EXPERTISE

B. Braun Melsungen AG
34209 Melsungen
Germany
Tel +49(0) 56 61 71-0
www.bbraun.com

Stimuplex® D Plus

The visible answer to nerve stimulation
plus ultrasound for Peripheral Nerve Blocks



NEW: High echogenic pattern design
for optimum needle visibility

B | BRAUN
SHARING EXPERTISE

Stimuplex® D Plus ...

... the best way to the nerve.

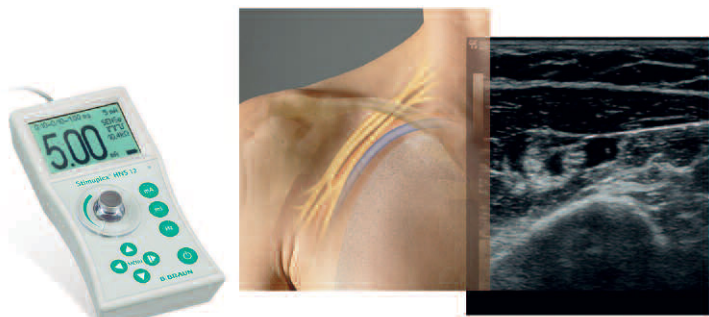
Regional Anesthesia

Enhanced ultrasound visibility

Recent studies demand a significant improvement on visibility of needle tip and shaft. The new Stimuplex® D Plus offers an outstanding visibility on the ultrasound screen due to a new laser-based marking technology.

This new feature, as well as our proven characteristics of a pin-point electrode and excellent gliding combined in one product, make Stimuplex® D Plus the ideal solution for optimal needle guidance.

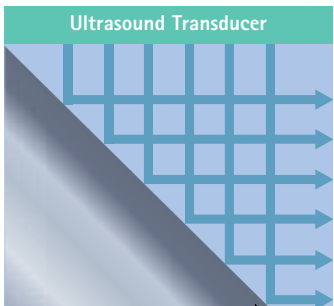
Stimuplex® D Plus allows use of two complementary technologies – ultrasound and nerve stimulation ("Advanced Dual Guidance") for enhanced safety and confidence .



Advanced
Dual
Guidance

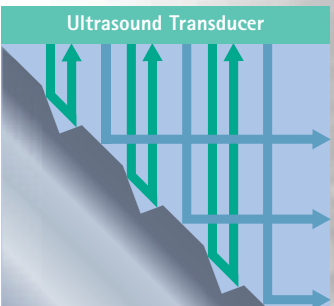
Features and user benefits

- High echogenic pattern application for optimized shaft recognition
- Tip geometry providing excellent recognition of the distal and proximal end of the bevel
- Proven pin point electrode for precise nerve stimulation
- Well-known atraumatic tip design (non-cutting bevel)



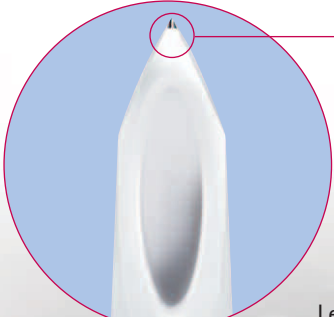
Conventional needle

At steeper angles, most of the ultrasound beam is reflected away from the probe and thus the needle is hardly visible under the ultrasound image.



New needle

Due to the special pattern design, even at steeper angles, part of the beam is reflected back to the probe creating a strong ultrasound image.



Pin point electrode for precise electrical nerve stimulation

Length markings

Pattern of markings underneath white coating for improved echogenicity (pattern design extends 20 mm from the needle tip)

White coating

Distal and proximal end of the bevel

