



Affordable, Easy-to-Use
Ultrasound for PICC
Placement and Central
Venous Access

A series of overlapping, curved green lines of varying thicknesses and shades (from light green to dark green) that sweep across the left side of the page from the top left towards the bottom right.

BARD



LARGE IMAGE • EASY-TO-USE • PORTABLE
MAXIMUM CONTROL FROM WITHIN THE STERILE FIELD

Integrated Carrying Handle for Increased Portability

Vascular Access Probe

- ▶ Solid state vascular access probe
- ▶ Control buttons located on the probe allow control, including printing, from within the sterile field

Vascular Access Image Depths and Image Gridlines

- ▶ Superficial 1.5cm image depth for shallow imaging, including pediatric placements
- ▶ Deep 6cm image depth for deeper needle guidance, including bariatric patients

Proportional Catheter Size Chart

- ▶ French scale reference helps select preferred catheter size for patient

Large, 12.1" Screen

Intuitive and Easy-to-Use Control Buttons

60-Minute Internal Battery

AC Adapter

2.5 Hour External Battery

Large Wheels for Negotiating Elevator Transitions and other Obstacles

Improved Patient Outcomes

The SITE~RITE[®] 5 Ultrasound System meets AHRQ (Agency for Healthcare Research and Quality) recommendations for use of real-time ultrasound guidance for central line placement.

Reduction of Complications

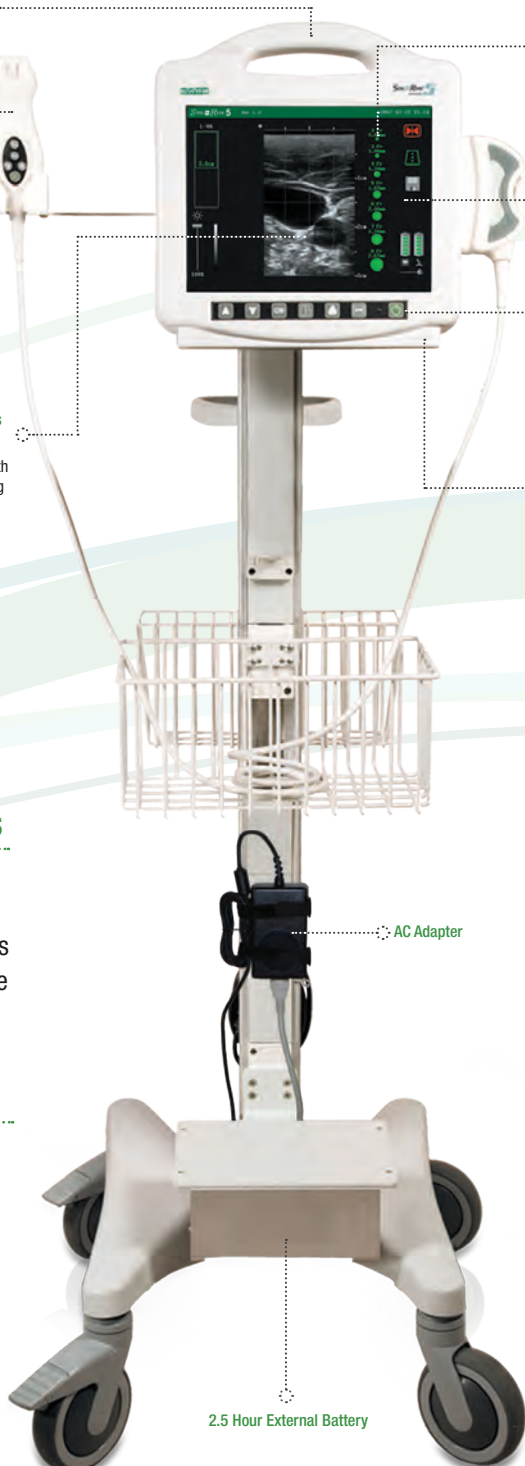
Clear vessel visualisation reduces risk of inadvertent arterial puncture, hematoma or pneumothorax.

Patented Needle-Guide

The SITE~RITE[®] 5 Ultrasound System's patented needle guides direct the needle to the target vessel.

Demonstrated Clinical Efficacy

Clinical investigation has demonstrated increases in vascular access procedural success for central catheter placement among clinicians using the SITE~RITE[®] Ultrasound System with the Modified Seldinger Technique for PICC and CVC placement.



Safety and Efficacy for Central Venous Access

The SITE~RITE® 5 Ultrasound System conforms to the Agency for Healthcare Research and Quality (AHRQ) recommendation for use of real time ultrasound for central line placement.¹

► Increased Success Rates²

Real time ultrasound guidance increases the success rates of internal jugular and subclavian access.

► Decreased Complications²

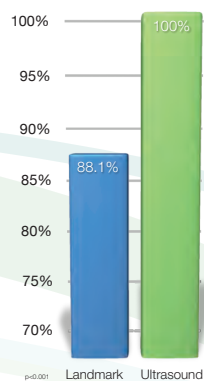
Reduced incidences of carotid puncture, hematoma and brachial plexus irritation.

► Reduced Venipunctures³

Reduction in the number of venipuncture kits used to achieve access.

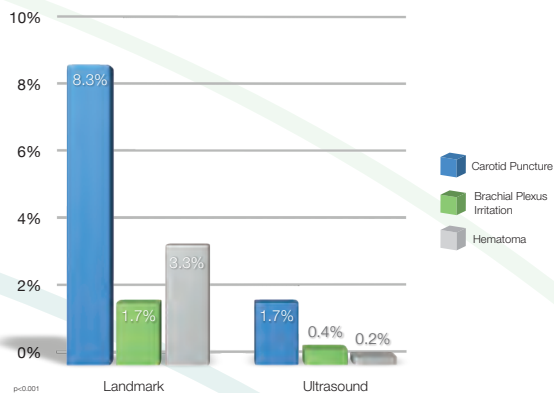
Increased Success Rate²

Percentage of Attempts



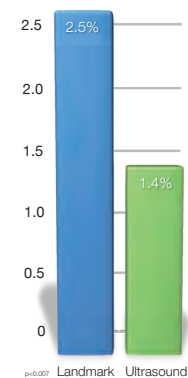
Reduced Incidence of Complications²

Percentage of Patients

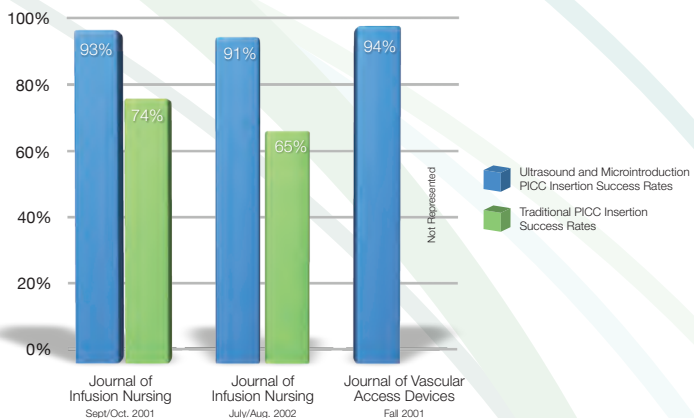


Reduction of Venipunctures³

with ultrasound guidance and needle guides
Subclavian Vein Attempts



Significant Improvement of PICC Insertion Using the SITE~RITE® 5 Ultrasound System and Microintroducer



Bibliography

1. T. Royer. "Nurse-driven interventional technology: A cost and benefit perspective." Journal of Infusion Nursing. Sept/Oct 2001 Vol. 24 No. 5 pp. 326-331
2. D. McMahon. "Evaluating new technology to improve patient outcomes." Journal of Infusion Nursing. July/August 2002 Vol. 21 No. 4 pp. 250-255
3. J. Santolucito. "A retrospective evaluation of the timeliness of physician initiated PICC referrals." Journal of Vascular Access Devices. Fall 2001 pp. 20-26

SITE~RITE® Ultrasound Systems, Guides and Probe Covers

SITE~RITE® Ultrasound Systems

| Product Code | Description |
|--------------|--|
| 9760069 | SITE~RITE® 5 Ultrasound System with UK adapter |
| 9760070 | SITE~RITE® 5 Ultrasound System with European adapter |
| 9762000 | SITE~RITE® 5 GCX Roll Stand |

SITE~RITE® 5 Needle Guides and Probe Covers

| Product Code | Description |
|--------------|--|
| 9001C0212 | 18 Ga. Needle Guide Kit + angled for 1.5cm, 2.5cm, 3.5cm |
| 9001C0214 | 20 Ga. Needle Guide Kit + angled for 1.5cm, 2.5cm, 3.5cm |
| 900013B01 | 21 Ga. Needle Guide Kit + angled for 1.5cm, 2.5cm, 3.5cm |
| 900023B01 | Intraoperative Ultrasound Cover Kit |
| 9001C0197 | Sterile Probe Sheath Kit |
| 0002A0070 | Ultrasound gel 250ml |

+ Needle guide kits include needle guides, sterile conductive gel, elastic bands and ultrasound probe sheath.

Learn More

For more information on the SITE~RITE® 5, please contact your Bard Access Systems representative. Or visit us on the web at www.bardaccess.com



Bard France S.A.S. (France, North Africa) FRANCE
Tel: + 33 1 39 30 58 58 Fax: + 33 1 39 30 58 59
service.commande@crbard.com www.bardfrance.fr

Bard de España S.A. SPAIN
Tel: + 34 93 253 7800 Fax: + 34 93 253 7834
spain.customerservice@crbard.com

C. R. Bard Portugal L.D.A. PORTUGAL
Tel: + 351 21 319 0330 Fax: + 351 21 319 0339
Bard.Portugal@crbard.com

Bard S.p.A. (Italy, Eastern Mediterranean, Middle East) ITALY
Tel: + 39 06 524 93 249 Fax: + 39 06 529 58 52
customerservice.italia@crbard.com www.barditalia.it

Bard Hellas SA GREECE
Tel: + 30 210 96 90 780 1 Fax: + 30 210 96 28 810
Bard.Hellas@crbard.com

Bard Medica S.A. SWITZERLAND
Tel: + 41 44 722 5360 Fax: + 41 44 722 5370
info-bce.access@crbard.com

Bard Czech Republic S.R.O. CZECH REPUBLIC
Tel: + 420 242 408 630 Fax: + 420 242 410 185
info-bce.access@crbard.com

C.R. BARD GmbH GERMANY
Tel: + 49 721 9445 124 Fax: + 49 721 9445 100
info-bce.access@crbard.com

Bard Poland Sp. z o.o. POLAND
Tel: + 48 22 321 0930 Toll Free: 0800 494900
Fax: + 48 22 321 0938 Toll Free: 0800 494901
info-bce.access@crbard.com

Bard Medica S.A. AUSTRIA
Tel: + 43 1 49 49 130 Fax: + 43 1 49 49 130 30
info-bce.access@crbard.com

Bard Limited UNITED KINGDOM
Tel: + 44 1293 527888 Fax: + 44 1293 552428
customer.services@crbard.com www.barduk.com

IRELAND
Tel: + 353 1 2130706 Fax: + 353 1 2130604
support.nordic@crbard.com

Bard Norden AB SWEDEN
Tel: + 46 42 38 60 00 Fax: + 46 42 38 60 10
support.nordic@crbard.com

Bard Norway AS NORWAY
Tel: + 47 815 00 266 Fax: + 47 815 00 299
support.nordic@crbard.com

Bard Denmark AB DENMARK
Tel: + 45 49 26 20 08 Fax: + 45 49 26 20 09
support.nordic@crbard.com

Bard Finland Oy FINLAND
Tel: + 358 9 347 30 53 Fax: + 358 9 347 10 07
support.nordic@crbard.com

Bard Medical SA (Pty) Ltd. SOUTH AFRICA
Tel: + 27 11 524 9900 Fax: + 27 86 537 7250
www.bard.co.za

Bard Benelux N.V. BELGIUM
Tel: + 32 14 28 69 52 Fax: + 32 14 28 69 66
custservicebelgium@crbard.com

THE NETHERLANDS
Tel: + 31 30 60 00 572 Fax: + 31 30 60 22 345
custservenederland@crbard.com