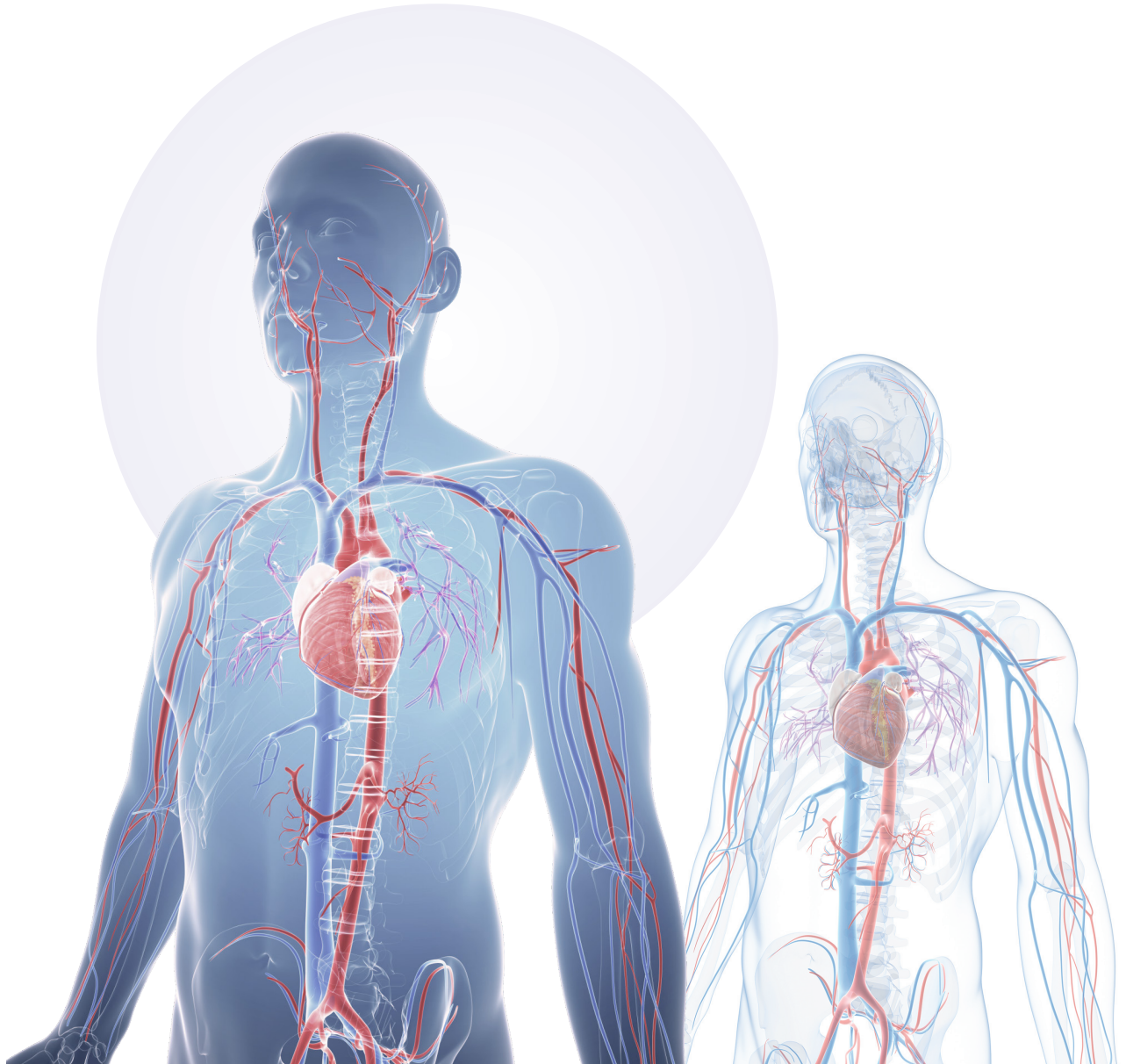


Vascular Access

Safe & Secure

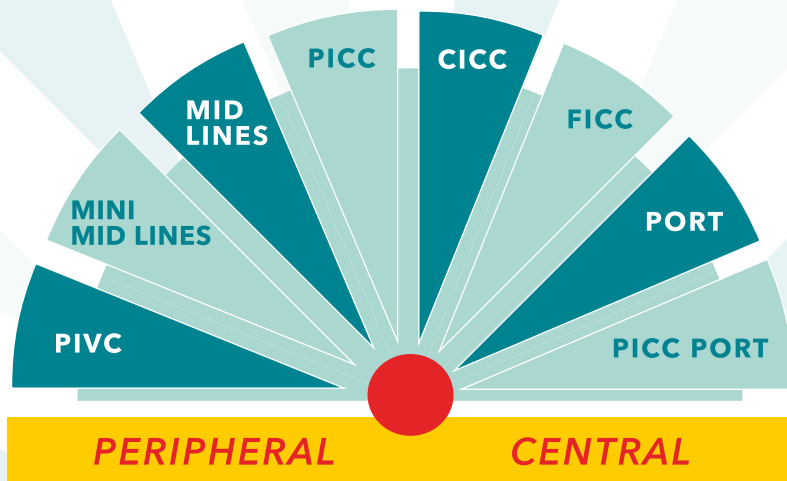


Specialized Solutions for Vascular Access

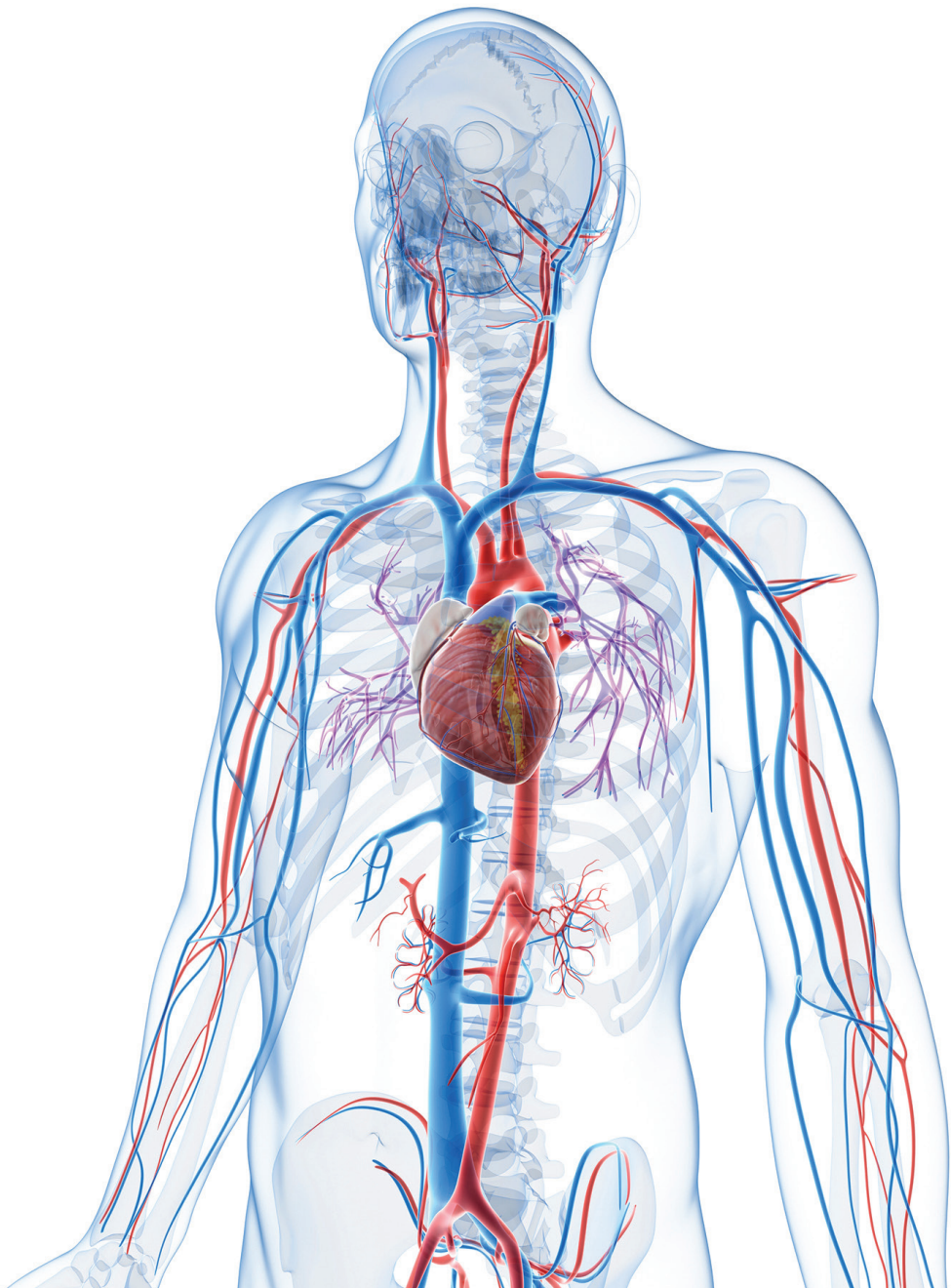
ONEMED

Plan1Health
A Poly Medicure Group Company

POLYMED
MEDICAL DEVICES
We Care As We Cure

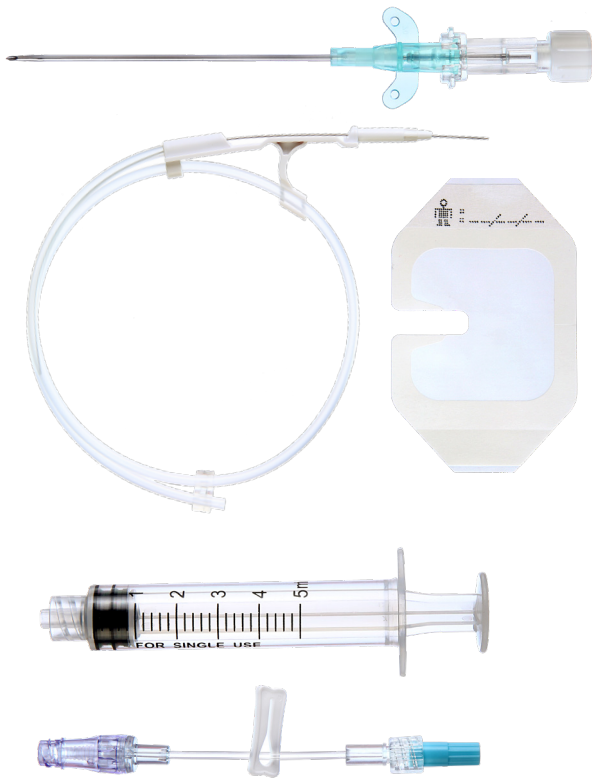


**A WIDE RANGE OF
MEDICAL DEVICES FOR ALL NEEDS**



ONEMED

Poly Lead-OTN



Over the Needle

- The New Mini-Mid line kit Over-the-needle is suitable for “difficult insertion vascular access” and needs approach to vessels by “Internal Juglar Vein”
- The kit contains also a soft flexible Kink resistant straight Nitinol Guide wire for conversion into a over-the wire
- Made of specially formulated and biocompatible radio opaque Polyurethane material providing strength during insertion
- Specially designed soft tip for smooth & easy insertion of catheter
- Needle free connector (tube length 5cm) provides closed system

Size		Catheter		Product Code			Flowrate		
		I.D. mm/O.D.mm		Catheter Length (mm)			ml/min		
				60	70	80	60	70	80
14G	Orange	1.7	2.0	13440	13441	13442	295	290	285
16G	Grey	1.3	1.7	13443	13444	13445	190	185	180
17G	White	1.1	1.5	13446	13447	13448	130	125	120
18G	Green	0.9	1.3	13449	13530	13531	80	75	70

Compatible with Power injectors upto 325-330 PSI

Poly Lead-OTW



Over the Wire

Radio-opaque PUR catheter with fixation wings: to be used with Seldinger technique by introducer needle and straight guidewire

Kit Consists of :

- Mini Mid Line Catheter
- Introducer Needle
- Nitinol Guidewire Straight Point (OD 0.018)
- Securement Device
- Wound IV Dressing
- Drape

Options Available :

- Probe cover
- Gel for U.S. Machine
- Needle Free Connector

Fr	Size G	Catheter Length mm	Flowrate ml/min	Guidewire Length mm	Introducer Needle	Ref Code
4	18G	40	40	250	21Gx54mm	13535
4	18G	60	38	250	21Gx54mm	13536
4	18G	80	34	250	21Gx54mm	13537
4	18G	120	31	400	21Gx54mm	13538
3	20G	40	24	250	21Gx54mm	13539
3	20G	60	19	250	21Gx54mm	13580
3	20G	80	17	250	21Gx54mm	13581
3	20G	120	13	400	21Gx54mm	13582
2	22G	40	17	250	21Gx41mm	13583
2	22G	60	14	250	21Gx41mm	13584
2	22G	80	12	250	21Gx41mm	13585
2	22G	120	8	400	21Gx41mm	13586

Compatible with Power injectors upto 325-330 PSI

HEALTHMID

Continuous development for continuous infusion

INFUSION SYSTEMS

Peripherally inserted
Venous Catheters

POWER!



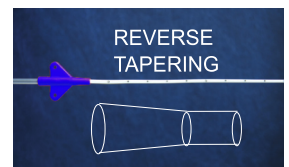
NOT FOR VENOUS CENTRAL ACCESS

HEALTHMID leverages the two decade experience of Plan 1 Health in the development and manufacturing of Venous Catheters

FEATURES

1 Reverse Tapering

For an easy and safe implantation procedure; reducing risk of bleeding. Reverse tapering offers also an excellent resistance to kinking.



2 Complete introducer set

- HEALTHMID Catheter
- Micro: introducer needle
- Needle free connector
- Paper ruler
- No CVC Label
- Straight Nitinol guidewire
- MicroCLAVE*
- Grip-Lok*
- Dilator-Introducer
- Instruction for use
- Scalpel

3 Power injectable catheters

All catheter versions are power injectable) maximum contrast medium flow rates are specified in the REF table below.

Max injector pressure: V300psi

Max fluid density: 12cP

Pre:heating of contrast medium to 37°C is recommended



1 MicroCLAVE® is a registered trademark of ICU Medical, Inc.

2 Grip-Lok® is a registered trademark of TIDI Products, LLC.

REFERENCES

REF	Lumen	Catheter Size	Catheter Material	Effective Length	Max Power Flow Rate	Reverse	Depth markings
201.62.10.13	Single	3FR	Polyurethane	250mm	2ml/s	Yes	Yes
201.62.10.14	Single	4FR	Polyurethane	250mm	5ml/s	Yes	Yes
201.62.10.15	Single	5FR	Polyurethane	250mm	7ml/s	Yes	Yes
201.62.10.24	Double	4FR	Polyurethane	250mm	2ml/s	Yes	Yes
201.62.10.25	Double	5FR	Polyurethane	250mm	5ml/s	Yes	Yes

PACKAGING

Box: 5 units

Sterile Unit: rigid PET-G blister tray sealed onto tyvek lid (primary sterile barrier), external paper pouch (secondary sterile barrier).

INTENDED USE

The HEALTHMID is indicated to be a venous peripherally implanted access for short to mid-term use.

In order to permit intravenous administration of fluids, medications, nutritional therapy and to withdraw blood samples.

The catheter should be inserted through a vein of the upper arm and is also indicated for "Power" injection of contrast media.

HEALTHMID is not a CENTRAL venous catheter, the insertion is easier than a PICC because is not requested the control of the catheter tip position.

WARNING:

The use of HEALTHMID is NOT indicated to infuse fluids with osmolarity >800 mOsm/L, pH<5 and pH>9, vesicants and/or potentially irritating the endothelium.



www.polymedicure.com

Plan1Health

Partnering clinical expertise
and industrial technology

www.p1h.it

ONEMED

Sales & Marketing Office:
Poly Medicure Limited
232-B, 3rd Floor, Okhla Industrial Estate,
Phase-III, New Delhi-110020, India
Tel:+91-11-33550700, 47317000
Fax:+91-11-26321894/1839
Customer Care No. : +91-129-4287053
info@polymedicure.com

Europe Representative Office:
Via Pietro. Verri 1
Business Center BOMA,
Build 1C 46100, Mantova. Italy
polymed.eu@polymedicure.com

EC REP
Obelis s.a
Boulevard Général Wahis 53
1030 Brussels, BELGIUM
Tel. : + (32) 27325954
E-mail : mail@obelis.net