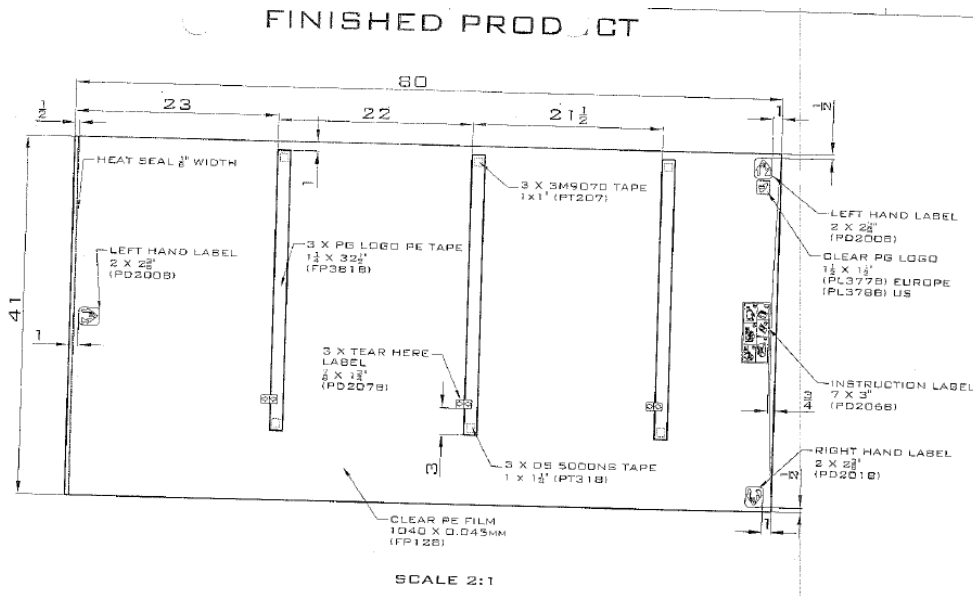


**1 Family of raw materials:**

Number	Name
76	Equipment covers



**2 Scope:**

This specification is applicable to equipment covers– raw material of 710-2110EU

**3 Description:**

This raw material is composed by polyethylene film

**4 Specifications:**

Parameter	Criteria	References
Product	C-ARM DRAPE 104X204cm	Supplier Internal Method
Material	Polyethylene	Supplier Internal Method
Class	I	Supplier Internal Method
Rule	1	Supplier Internal Method
CFU/g	≤100 (in non sterile)	Supplier Internal Method

**5 Internal Analytical criteria:**

Analytical criteria are described according to Reception Bulletin Control.

**6 Storage conditions:**

Store in a dry place at room temperature and protect from sunlight.

**7 References:**

Supplier's specification – 710-2110EU TDS

**8 Support documents for batches' approval:**

- Safety data sheet
- Certificate of analysis according to specification
- Technical data sheet (specification and composition)/technical design
- Reception Bulletin Control