



TECHNICAL DATA SHEET

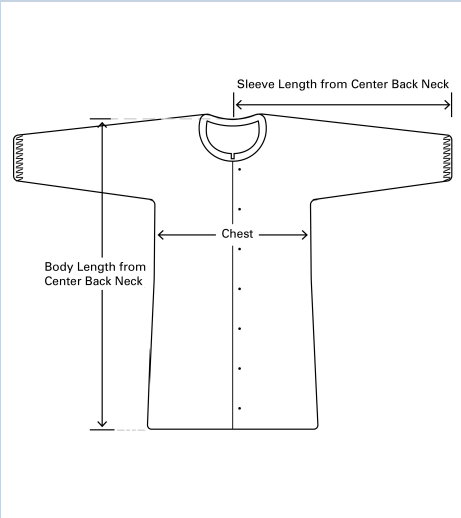


PRODUCT INFORMATION

DuPont™ Tyvek® IsoClean® Gown. Serged Seams. Bound Neck with Ties. Knit Cuffs. Bound Ties Originating at Center Front Waist. White.

ATTRIBUTES

| | |
|------------------|------------------------------|
| Full Part Number | IC701SWHxx0030yy (xx=size) ? |
| Fabric/Materials | Tyvek® IsoClean® |
| Design | Gown |
| Seam | Serged |
| Color | White |
| Quantity/Box | 30 per case |
| Sizes | 00 |
| Option Codes | 00 |



SIZE TABLE

| SIZE | SLEEVE LENGTH | CHEST WIDTH | FITS CHEST | BODY LENGTH |
|------|---------------|-------------|-----------------|-------------|
| UN | 33 1/4 | 27 1/2 | 41 3/4 - 45 1/4 | 39 |

PHYSICAL PROPERTIES

| PROPERTY | TEST METHOD | TYPICAL RESULT | STDDEV |
|--|-------------|-------------------------|-------------------------|
| Basis Weight | ASTM D3776 | 1.22 oz/yd ² | 0.04 oz/yd ² |
| Burst Strength - Mullen. | ASTM D774 | 54 psi | 11 psi |
| Breaking Strength - Grab (MD). | ASTM D5034 | 18 lb _f | 2 lb _f |
| Breaking Strength - Grab (CD) | ASTM D5034 | 23 lb _f | 3 lb _f |
| Bacterial Filtration Efficiency (3.0 micron) | ASTM F2101 | 99.0 % | 0.5 % |
| Hydrostatic Head | AATCC 127 | 91 cm H ₂ O | 14 cm H ₂ O |
| Wearing Apparel Flammability | 16 CFR 1610 | Class 1 | |

WARNING

Seams and closures have less barrier than fabric.

Note: for protection from hazardous or infectious liquids, additional barrier tests are required to establish suitability for use.

*CAUTION: This information is based upon technical data that DuPont believes to be reliable. It is subject to revision as additional knowledge and experience are gained. DuPont makes no guarantee of results and assumes no obligation or liability in connection with this information. It is the user's responsibility to determine the level of toxicity and the proper personal protective equipment needed. The information set forth herein reflects laboratory performance of fabrics, not complete garments, under controlled conditions. It is intended for informational use by persons having technical skill for evaluation under their specific end-use conditions, at their own discretion and risk. Anyone intending to use this information should first verify that the garment selected is suitable for the intended use. In many cases, seams and closures have shorter breakthrough times and higher permeation rates than the fabric. Please contact DuPont for specific data. If fabric becomes torn, abraded or punctured, or if seams or closures fail, or if attached gloves, visors, etc. are damaged, end user should discontinue use of garment to avoid potential exposure to chemical. Since conditions of use are outside our control, we make no warranties, express or implied, including, without limitation, no warranties of merchantability or fitness for a particular use and assume no liability in connection with any use of this information. This information is not intended as a license to operate under or a recommendation to infringe any patent or technical information of DuPont or others covering any material or its use.

Cellosolve® and Selexol™ are registered trademarks of Dow Chemicals Company. Skydrol® is a registered trademark of Solutia.

Data presented does not comprise a product specification.

CLEANROOM WARNINGS

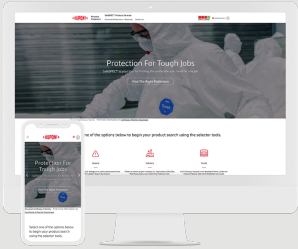
Anyone who begins to exhibit allergic response during the use of DuPont products should immediately cease using these products. The incident should also be reported to DuPont at 1.800.441.3637.



Latex Statement: As of January 1, 2006, DuPont production specifications exclude use of components containing natural rubber latex in the manufacture of DuPont™ Tyvek® IsoClean®, Tyvek™ Micro-Clean® 2-1-2 and ProClean® garments, and DuPont™ ProShield® 10 and DuraTrac™ shoe covers. Notwithstanding, DuPont™ Tyvek® Micro-Clean® 2-1-2 and Duratrac™ shoe covers produced by Cardinal Health prior to May 2008 may contain dry crumb natural rubber latex.

Warning: Cleanroom apparel should not be used around heat, flames, sparks or in potentially flammable or explosive environments. Cleanroom fabrics should have slip-resistant materials on the outer sole of boots, shoe covers, or other garment surfaces in conditions where slipping could occur.


DuPont™ SafeSPEC™ - We're here to help


Our powerful web-based tool can assist you with finding the appropriate DuPont garments for chemical and controlled environment hazards.



DuPont Personal Protection
SafeSPEC™

 [DuPont Personal Protection](#)

 [DuPont Personal Protection](#)

CREATED ON: OCTOBER 9, 2024