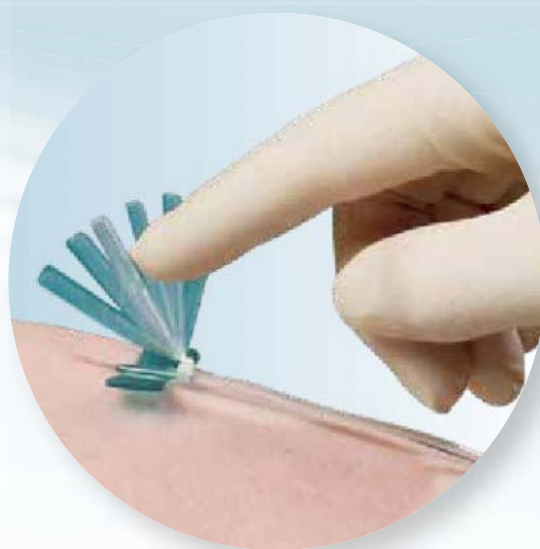




# Surflo<sup>®</sup> Safety Winged Infusion Set

*Safety devices of the Surshield<sup>®</sup> family*



## Protection and Care

- *Safety*
- *Ease of use*
- *Patient comfort*
- *User satisfaction*



# Surflo® Safety Winged Infusion Set

## Safety

The Surshield safety mechanism encapsulates the cannula irreversibly preventing needle stick injuries. Upon activation an audible click confirms the proper activation, additional visual confirmation is present. During activation, finger tips stay at all times away from the cannula tip.

## Ease of use

Cannula sharpness combined with a special silicone coating allows an easy and smooth placement. User inspired wing design ensures a firm grip during placement. The easy one hand activation of the safety mechanism does not require a change in established needle insertion techniques.

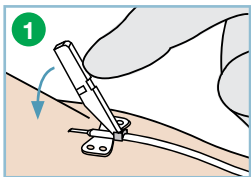
## Patient comfort

The excellent quality of the Terumo® cannula is at the core of minimising trauma. Patients reported having experienced an almost painless placement.

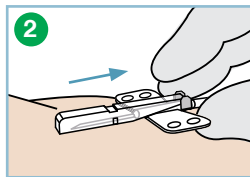
## User satisfaction

The design and performance of the Surflo® safety winged infusion sets are supporting a successful placement and increasing end-user satisfaction due to less discomfort caused to patients.

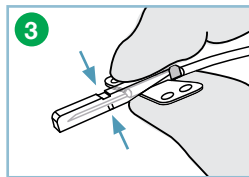
## Recommendation for use



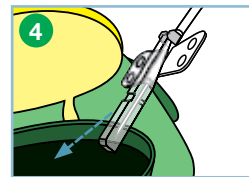
1 After successful infusion, place the needle protector over the needle.



2 Hold wing needle behind the wings and withdraw it from the vein.



3 With the thumb and index finger, press together the wings at the wing base and press the protective cover together with thumb and index finger until you hear and see the needle lock in place.



4 Then dispose of the needle in the Terusafe box.

## Products and specifications

CE  
0123

Code	Colour	Cannula - external Ø		Cannula length	Tubing length	Dead space mL
		G	mm			
SV*S18NL09	Pink	18	1.2	19 mm	90 mm	0.21
SV*S19NL09	Yellow	19	1.1	19 mm	90 mm	0.21
SV*S21NL09	Green	21	0.8	19 mm	90 mm	0.20
SV*S22NL09	Black	22	0.7	19 mm	90 mm	0.20
SV*S23NL09	Lt. Blue	23	0.6	19 mm	90 mm	0.20
SV*S25NL09	Orange	25	0.5	19 mm	90 mm	0.19

Code	Colour	Cannula - external Ø		Cannula length	Tubing length	Dead space mL
		G	mm			
SV*S18NL30	Pink	18	1.2	19 mm	300 mm	0.45
SV*S19NL30	Yellow	19	1.1	19 mm	300 mm	0.45
SV*S21NL30	Green	21	0.8	19 mm	300 mm	0.41
SV*S22NL30	Black	22	0.7	19 mm	300 mm	0.41
SV*S23NL30	Lt. Blue	23	0.6	19 mm	300 mm	0.40
SV*S25NL30	Orange	25	0.5	19 mm	300 mm	0.40

Shelf life: 3 years  
Packaging: 10 x 50 pieces



**Terumo Corporation**  
44-1, 2-chome, Hatagaya  
Shibuya-ku, Tokyo 151-0072,  
Japan  
Tel.: +81 3 3374 8111  
Fax: +81 3 3374 8196

### European Headquarters

**Terumo Europe N.V.**  
Interleuvenlaan 40  
3001 Leuven, Belgium  
Tel.: +32 16 39 25 80  
Fax: +32 16 40 02 49

### European Offices

**Terumo Europe N.V.  
Benelux Sales Division**  
Interleuvenlaan 40  
3001 Leuven, Belgium  
Tel.: +32 16 39 25 80  
Fax: +32 16 39 25 99  
The Netherlands:  
Tel.: 0800 0220396  
Fax: 0800 0220414

**Laboratoires Terumo France S.A.**  
Parc Ariane - Bât. Uranus  
1, rue Hélène Boucher  
78284 Guyancourt Cedex, France  
Tel.: +33 130 96 13 00  
Fax: +33 130 43 60 85

**Terumo Deutschland GmbH**  
Ludwig-Erhard-Strasse 6  
65760 Eschborn, Germany  
Tel.: +49 6196 80 230  
Fax: +49 6196 80 23 200

**Terumo Deutschland GmbH**  
Zweigniederlassung Spreitenbach  
Bodenackerstrasse 3  
8957 Spreitenbach, Switzerland  
Tel.: +41 56 419 10 10  
Fax: +41 56 419 10 11

**Terumo Europe España SL**  
Avda. Juan Carlos I, Nº 13 - 7ª Planta  
Edificio Torre La Garena  
28806 Alcalá de Henares (Madrid),  
Spain  
Tel.: +34 9021 01 298  
Fax: +34 9021 01 358

**Terumo Italia S.r.l.**  
Via Simone Martini, 143/145  
00142 Roma RM,  
Italy  
Tel.: +39 0651 96 14 20  
Fax: +39 0650 30 407

**Terumo Sweden AB**  
Nya Varvet, Byggnad 90  
Sven Källfelts Gata 18  
426 71 Västra Frölunda,  
Sweden  
Tel.: +46 3174 85 880  
Fax: +46 3174 85 890

**Terumo Denmark  
Filial of Terumo Sweden AB**  
Tel.: +45 7020 93 80  
Fax: +45 7020 94 80

**Terumo UK Ltd**  
Tamesis  
The Causeway  
Egham, Surrey  
TW20 9AW, United Kingdom  
Tel.: +44 1784 476 200  
Fax: +44 1784 476 201

**Terumo Europe N.V.  
Moscow Representative Office**  
BC Northern Tower  
13Fr., 10 Testovskaya Street  
Moscow 123317, Russia  
Tel.: + 7 495 988 4740  
Fax: + 7 495 988 4739

**Terumo Corporation Dubai Branch  
(Middle East and Africa)**  
Al Masraf Tower, 22nd Floor  
P. O. Box 20291 Dubai  
U.A.E.  
Tel.: + 971 4 221 2220  
Fax: + 971 4 221 3330

Addresses subject to change,  
please consult our Website.



© Registered Trademark  
Published by Terumo Europe N.V.  
HO 60GB-0102FK-VII(02.13)E